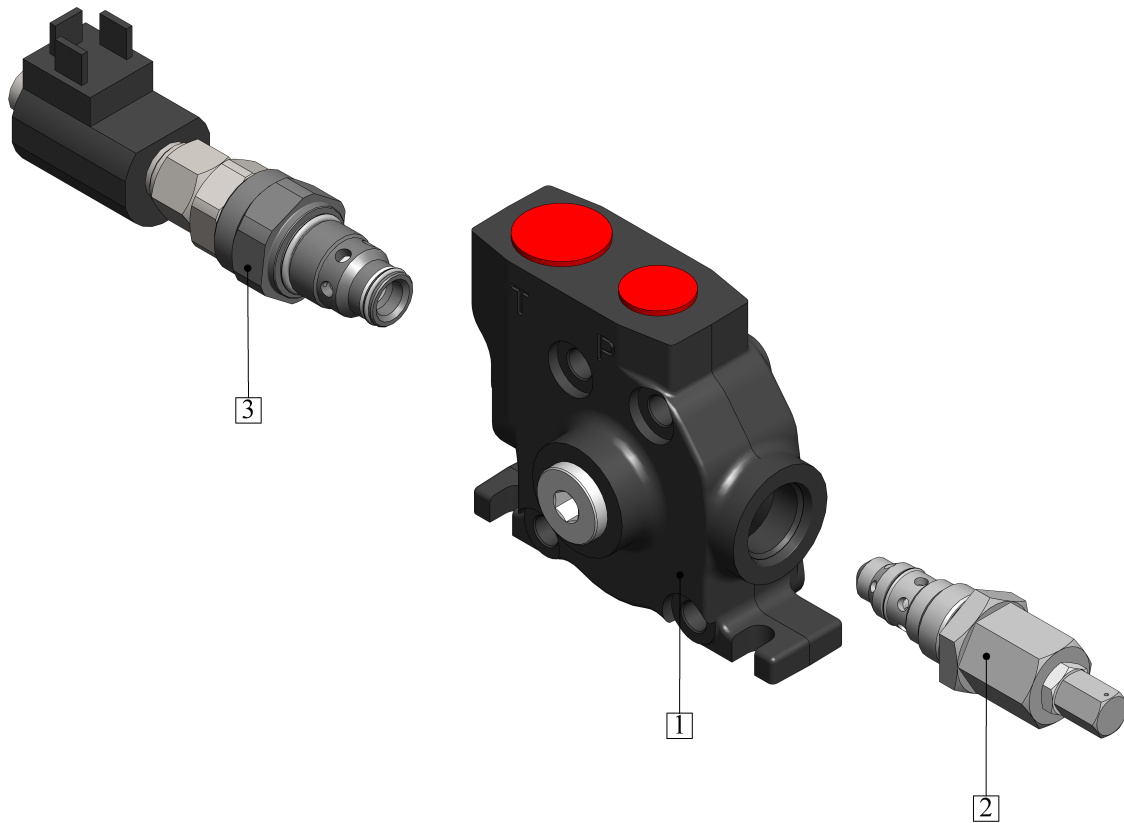


NEW INLET COVER - L
for directional control valve PC70, ZC70, PC100, ZC100



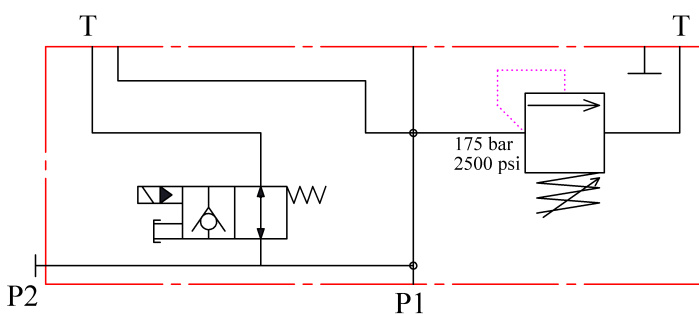
Features:

- Max. operating pressure - 300 bar.
- Side inlet P1.
- Flexible positioning of the relief valve both front and back
- Different thread specifications

Available with:

- Pilot operated main relief valve
- Direct operated main relief valve
- Solenoid unloader valve

Sample order code for inlet cover with unloader valve
L1(175)/ELP24VDC/G34



Sample order code for inlet cover without unloader valve
L1/G34

